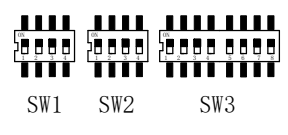
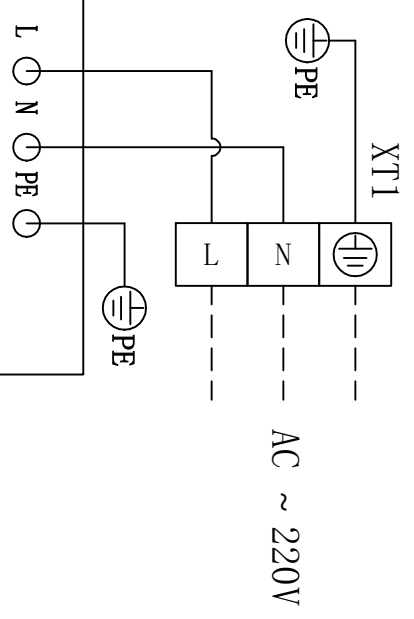
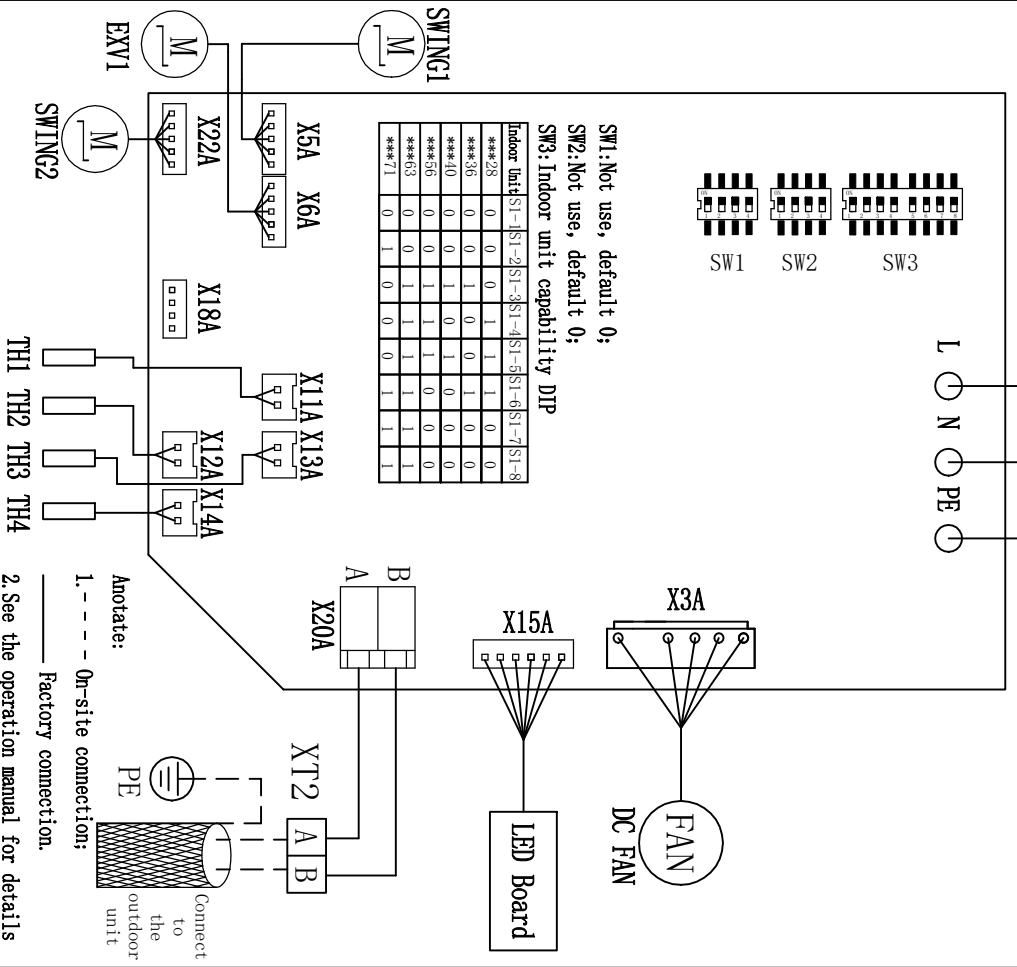


D001NP500001A



SW1: Not use, default 0;
 SW2: Not use, default 0;
 SW3: Indoor unit capability DIP

Indoor Unit	ST-1	ST-2	ST-3	ST-4	ST-5	ST-6	ST-7	ST-8
***28	0	0	0	1	1	1	1	0
***36	0	0	1	0	0	1	0	0
***40	0	0	1	0	1	0	0	0
***56	0	0	1	1	1	0	0	0
***63	0	0	1	1	1	1	1	1
***71	0	1	0	0	0	1	1	1



Connect to the outdoor unit

PE

Anotate:
 1. --- On-site connection;
 --- Factory connection.
 2. See the operation manual for details of other wiring operations.

TH1	Coil inlet temp	TH4	Ambient temp	EXV1	Electronic Expansion Valve
TH2	Central coil temp	SWING1	Left and right swing motor		
TH3	Coil outlet temp	SWING2	Up and down swing motor		